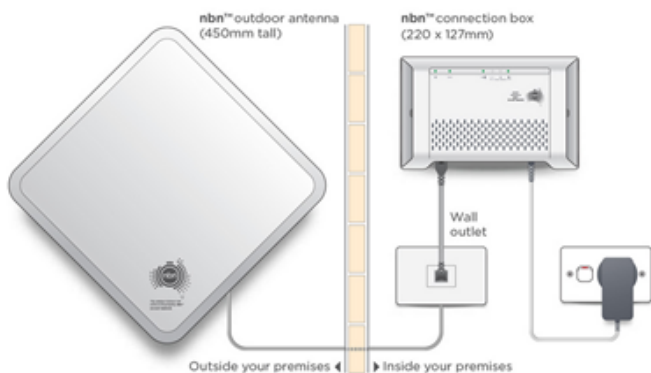


BYO Router Setup

Wireless Connections

Step 1

Locate the NBN Connection Box that has been installed inside your property.



Step 2

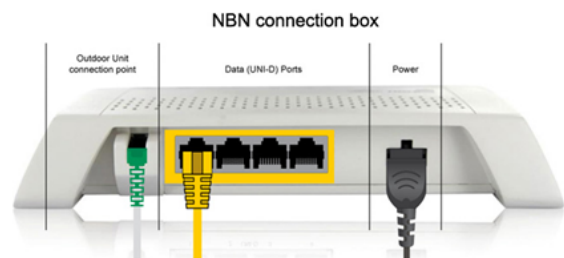
Ensure that the power cable is securely in place and that the POWER, STATUS and ODU lights are on and solid green. You should see at least one signal strength light on (this may be flashing).



If the STATUS or ODU lights are off or showing red, please contact our support team.

Step 3

Now look on the under side of the NBN Connection Box where you can see the Uni-D ports surrounded by yellow.



Using an ethernet network cable connect your router from its WAN port to the relevant Uni-D port on the NBN Connection Box. We generally activate the next available Uni-D port – starting with Uni-D 1. We will detail your Uni-D port number in our emails to you.

Step 4

Connect a computer or laptop to your BYO router via a cable or by WIFI and access the router configuration page. If you are unsure how to do this, please consult the router user guide.

Step 5

Most routers will provide a Quick Start Guide or Setup Wizard – please try and follow these steps. Ensure that your router is configured in WAN mode and encapsulation is set to PPPoE. On most devices you should leave all other settings as default. Then configure your BYO router using the ISP username and password that we will have emailed and SMS'd to you.

Due to the number of router brands available it is hard to give precise setup information here. We recommend consulting your router user guide or speaking to the manufacturer of your device.

Step 6

After you have successfully configured your BYO router please wait a couple of minutes for it to connect to the network. After a couple of minutes you should see the authentication light on the router become lit and steady (not flashing). The authentication light is often labelled 'Internet' or 'www' or 'Web'. Please consult your router user guide if you are unsure which light is the authentication light.

Troubleshooting

Symptom	Things to try
Status or ODU lights are red on the NBN Connection Box	You will need to contact our team in this instance, and we may need to log a fault with NBN.
Signal strength is zero or not on	<ol style="list-style-type: none">1. Check that the NBN Connection Box is still connected to your Outdoor Unit via the Outdoor Unit Connection Point on the NBN Connection Box.2. Check that nothing is obstructing the Outdoor Unit from receiving the wireless signal.3. You may need to contact our team in this instance, and we may need to log a fault with NBN.
www or internet light does not come on on your router	<ol style="list-style-type: none">1. Ensure that the router has been correctly configured with the ISP username and password. Triple check for any spelling mistakes or typos.2. Ensure that you are connected to the correct Uni-D port on the NBN box.3. Try an alternative network cable to connect your router to the NBN box.4. Ensure that the router is configured in WAN mode.

Technical Support

If you require assistance setting up your BYO device our team is available.

7am – Midnight (Weekdays) AET

8am – 8pm (Weekends) AET

Phone: **1800 733 368**

Live Chat: **www.moretelecom.com.au**

WhatsApp: **+61480096696**

Overseas: **+61390219630**