

How to set up your Google Nest Wifi

Get ready to welcome Google Nest Wifi to your home.

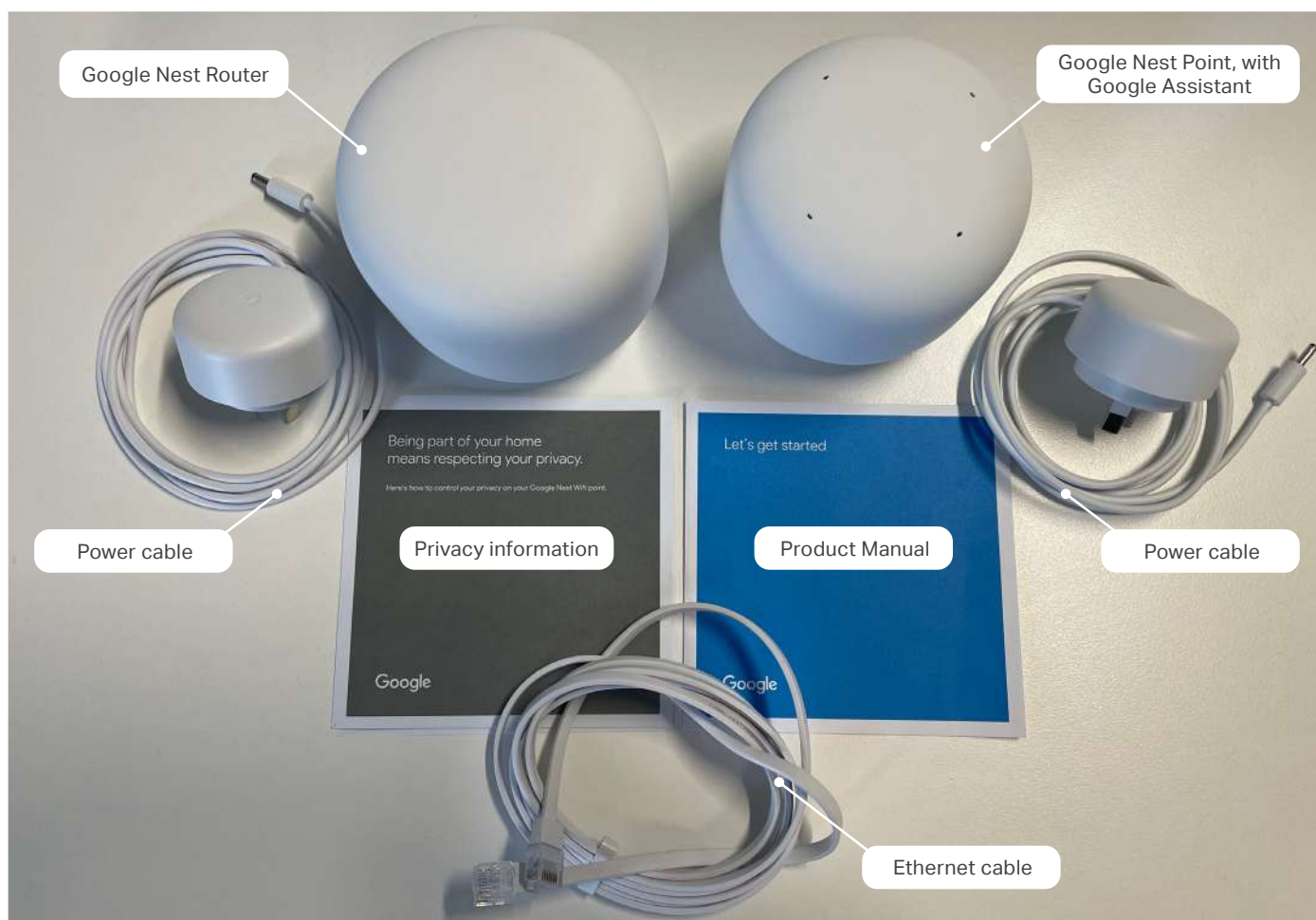
You have made a great choice! Google Nest Wifi will:

- blanket your home with a strong a reliable Wifi connection
- update automatically, which means your network stays safe and secure and,
- will effortlessly look at home thanks to its chic design.

When setting up the Google Nest Wifi, there are a few items you will need:

- ✓ A Google Nest Wifi router. This will broadcast your Wifi.
- ✓ A Google account
- ✓ An up-to-date smartphone or tablet such as: Android phone running Android 5.0 and higher, Android tablet running Android 6.0 and higher, or an iPhone or iPad with iOS 11.0 and higher.
- ✓ The latest version of Google Home app (available to download via Android or iOS app stores), and
- ✓ A internet service (you have come to the right place for that! Check out More's NBN plans [here](#))

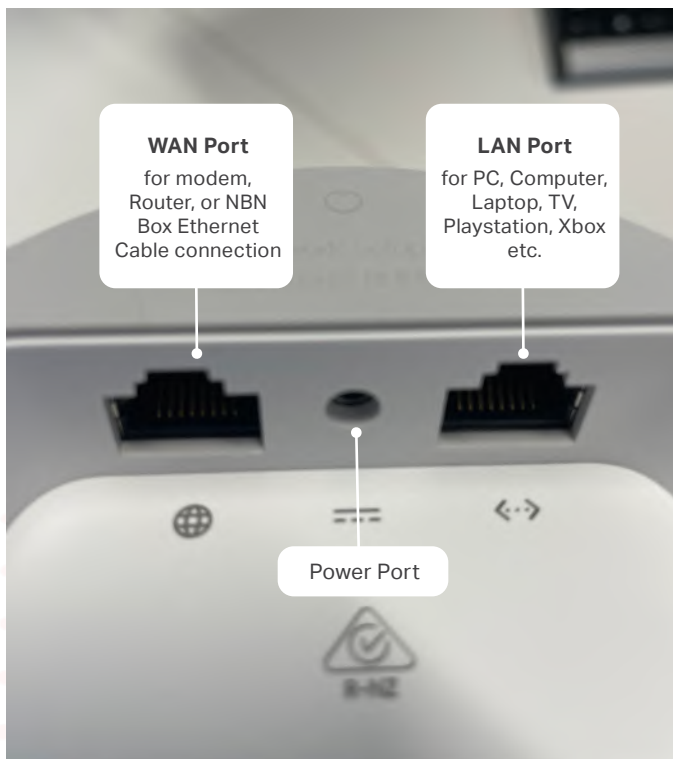
What's in the box?



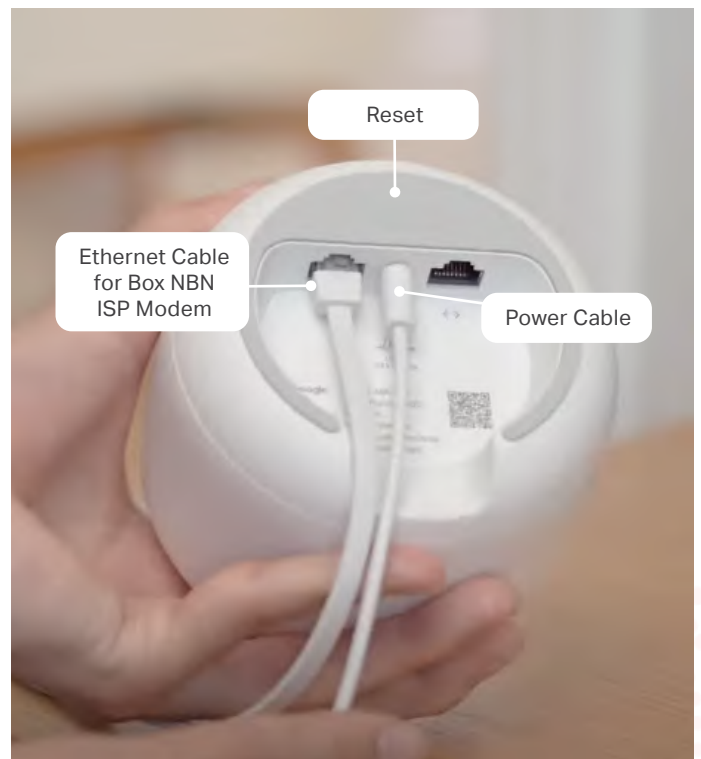
The Router is smooth, and does not have speakers



The cables ports are located underneath.



Router underneath view



Router underneath view

FTTP, FTTC, HFC, and Fixed Wireless customers:

To connect you will need your nbn™ device and the Google router.

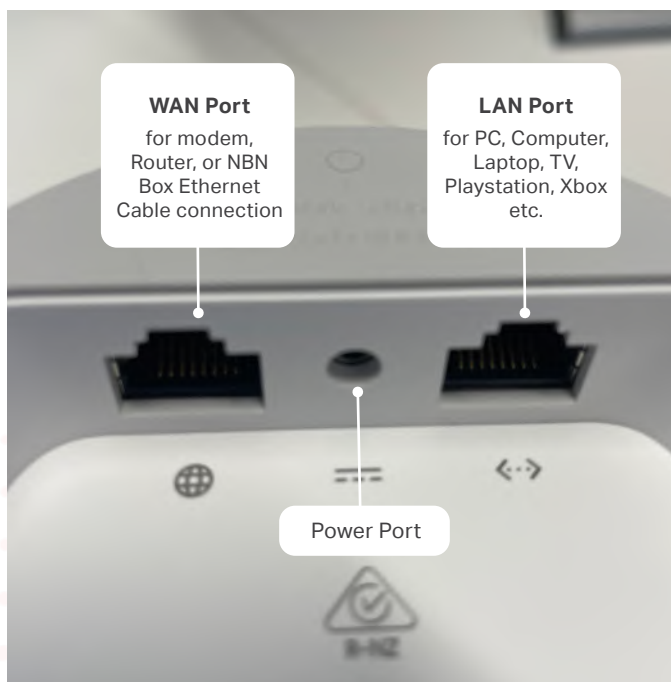
**PLEASE NOTE: Google Nest Wifi routers are not compatible for FTTN - A VDSL modem will be required*

How to set up your Google Nest Wifi router

As the Google Nest Wifi is not pre-configured you will need to do a few set-up procedures, which we have stepped out below.

You can also view Google's '[How to set up your Nest Wifi](#)' set up video.

1. Download the Google Home app on Android or iOS
2. Set up a home if this is your first time using the Google Home app.
3. Position your Google router in a location that is not obscured by objects, for example on a shelf or beside your entertainment unit. For optimum Wifi performance place your Google Nest Wifi router at eye-level or higher.
4. Connect the Ethernet cable to the Nest router's WAN port. For FTTP/FTTC/HFC/Fixed Wireless the Ethernet cable will run from the nbn™ connection device. For FTTN/B the Ethernet cable will run from the modem.



Router underneath view

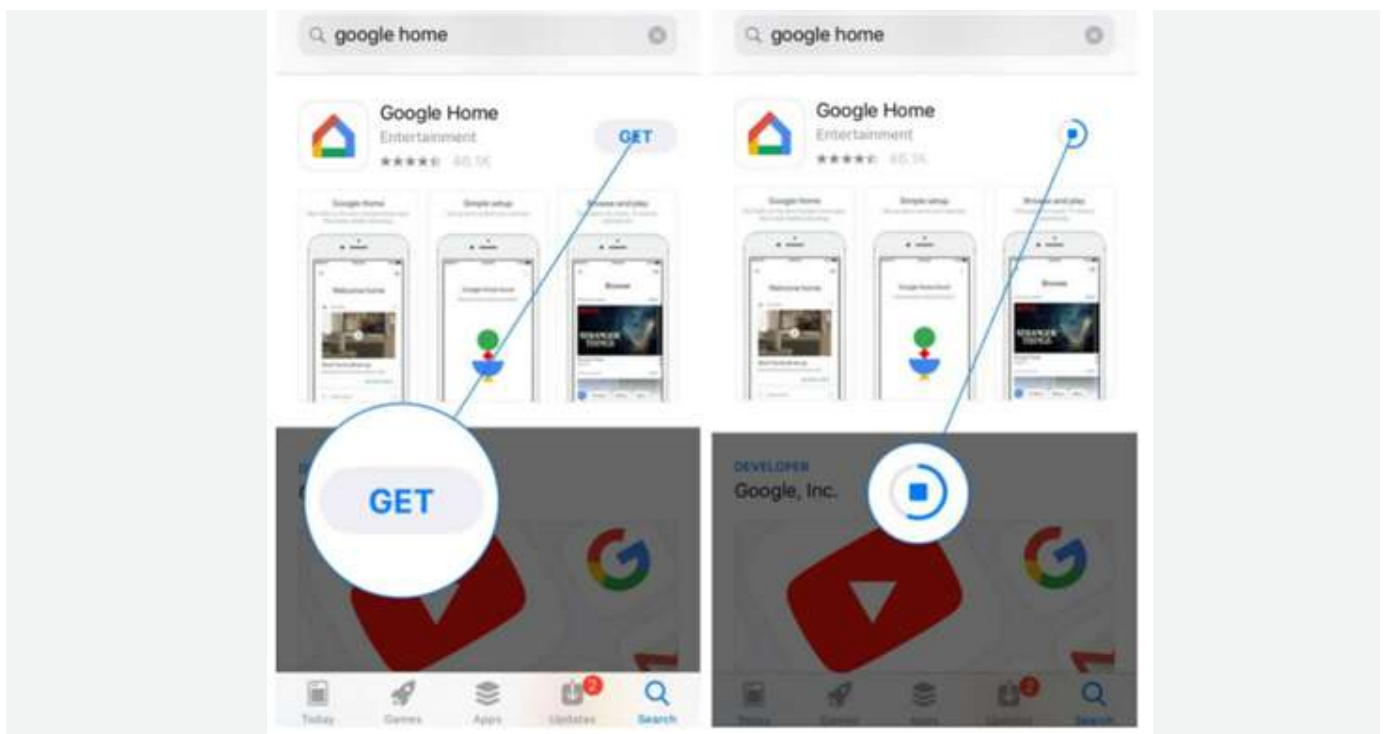


Router underneath view

5. Plug the power adapter into the Google Nest router. Wait a minute for the light to pulse white, this indicates that the router is powered on and ready for set up.



6. Download then open the Google Home app on your phone or tablet (please note that Mobile Data and Bluetooth should be first ON) and then Login using your existing Google account or create a new Google account.



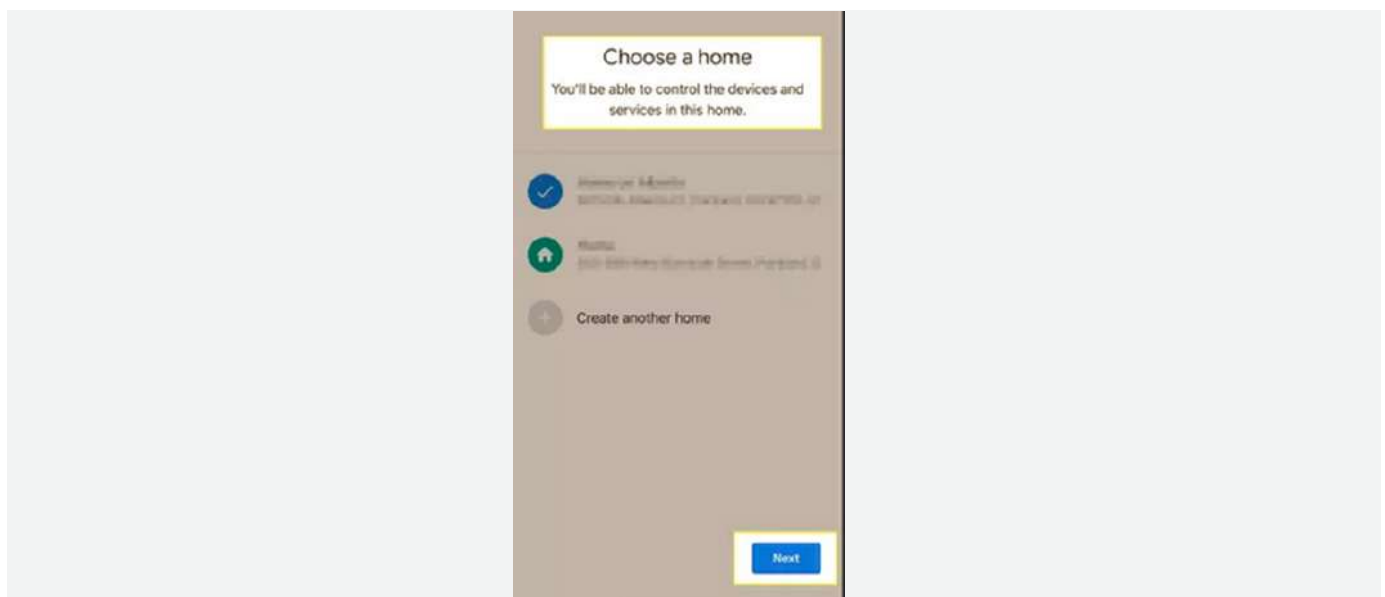
7. Tap add + > Set up device.



- Under 'New devices', tap 'Set up new devices in your home'.



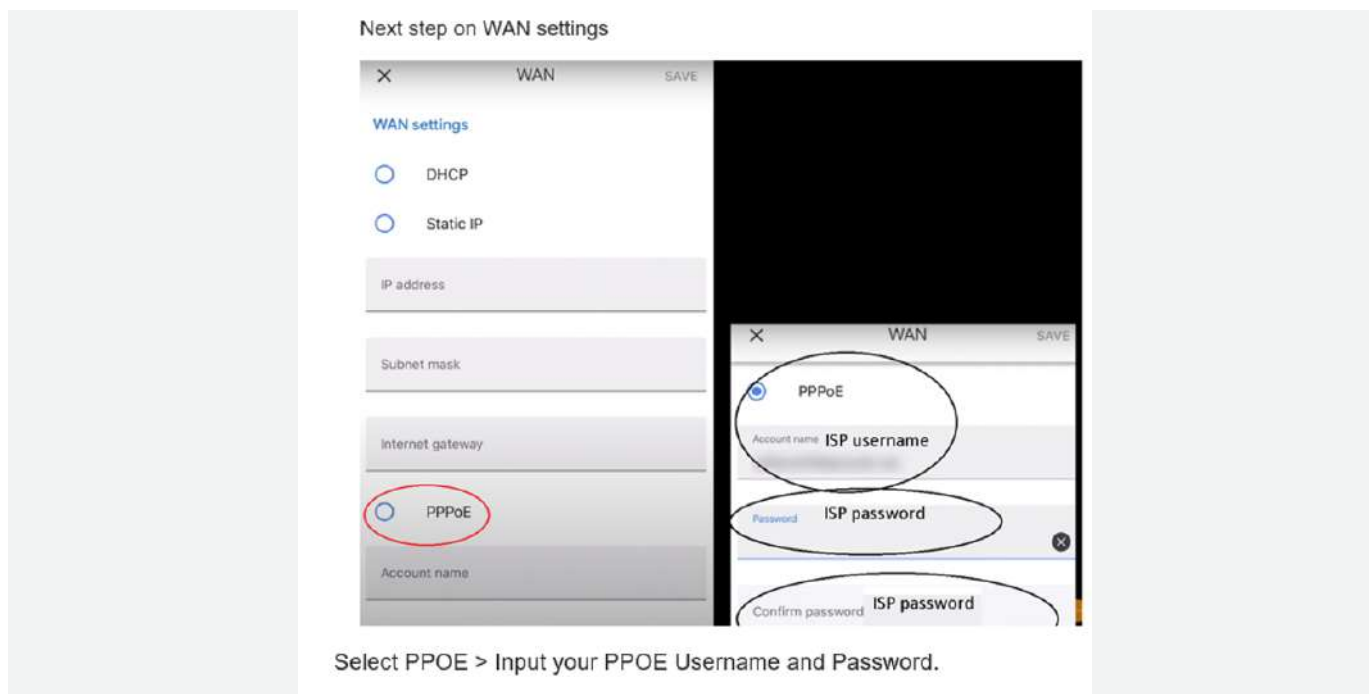
- Choose a home.



- Take a photo of the QR code or manually input the setup Key on the bottom of the Google Nest Router. Once the code is properly applied, you should be connected to the Router Wifi.



11. When prompted to configure the connection type, select 'WAN' and then 'PPPoE', and enter the Username into Account Name and password provided in your email from More.
12. You'll return to Home page, click Next, you'll be asked to create a Wifi name.



13. Give your Wifi network a secure name and a password. The password you create will be needed later when connecting your devices to the Wifi.
14. The router will create the Wifi network. This should only take a few minutes.
15. If you'd like to add another Wifi device, tap 'Yes' in the app to continue now or you can add extra devices later through the Add + > Set up device menu in Google Home.

You are now Google Nest Wifi connected!

If you find yourself struggling to connect, please review the following help articles:

[WAN settings from Google Nest Help](#)

[How to set up Google Nest Wifi Router](#)

Or reach out to our friendly technical support team on Live Chat or visit the contact us page [here](#).